

FABRIC  
OPTIONS

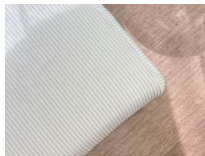


# Monaco Sofa - Config E With Open End

## Product Specifications

Dimensions	W 294cm x D 219cm x H 72cm
Seat Height	45cm
Seat and Back Cushions	Dacron Wrap Visco Blend GECA Certified Australian Foam Seat
Frame	Tasmanian Oak Hardwood Structural Frame
Fabric	Available in a Large Range of Fabrics (See PDFs)
Suspension	Italian Made "Black Cat" Suspension System
Made	Australia
Manufacturer	Bent Design
Assembly Required	None

FABRIC  
OPTIONS



**Manufacturer**  
BENT DESIGN  
manufacturer

## Available Options

With Left Terminal Chaise
With Right Terminal Chaise

