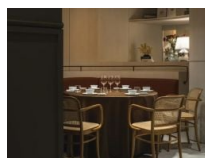


CUSTOM
OPTIONS

811 Hoffmann Armchair - Cane Seat - Cane Backrest - By TON

Product Specifications

Seat Height	46cm
Seat Width	45cm
Seat Depth	41cm
Armrest Height	68cm
Overall Height	80cm
Colour	Standard and Pigment Finish (See attached PDFs)
Seat	Natural Cane
Frame	European Beechwood
Weight of product	5.1
Carton Dimensions	55 x 55 x 84
Designer	Josef Hoffman
Manufactured	TON CZ (Czech Republic)
Warranty Residential	5 Year Structure / 2 Year Cane Seat
Warranty Commercial	5 Year Structure / No Warranty on Cane Seat

Designer Josef Hoffmann
Manufacturer TON manufacturer

Designer Image

Available Options

Cane Seat and Backrest - Standard Finish

Cane Seat and Backrest - Pigment Finish