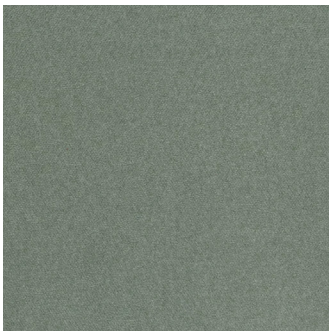
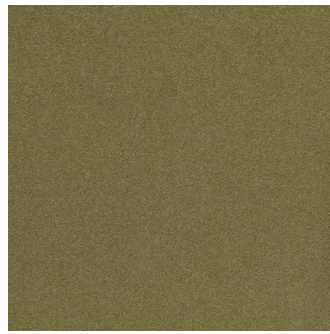


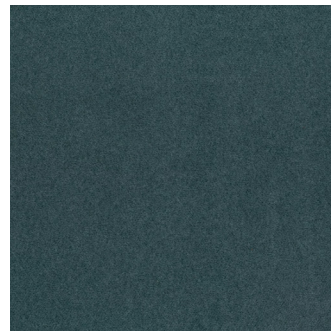
ELTON



Agave



Army



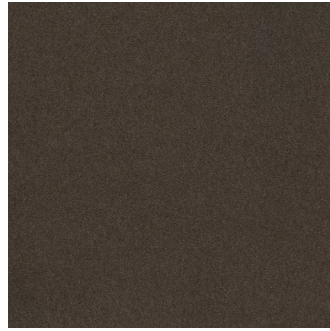
Atlantic



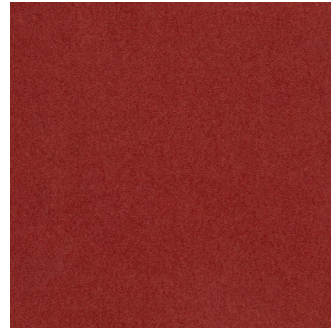
Bark



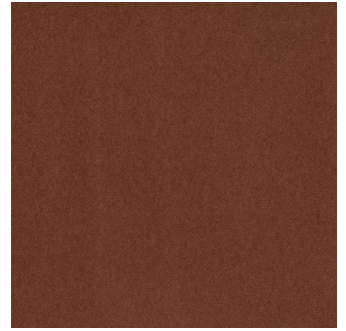
Carbon



Clove



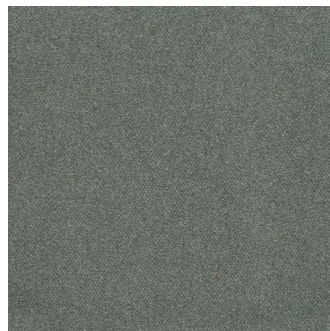
Cranberry



Date



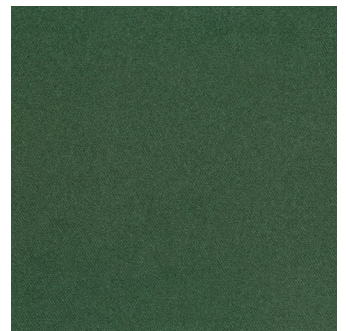
Eucalyptus



Graphite



Honeycomb



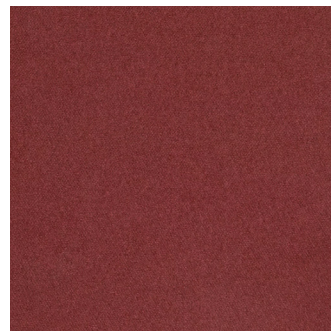
Ivy



Jarrah



Lake



Merlot



Midnight



Moss



Musk



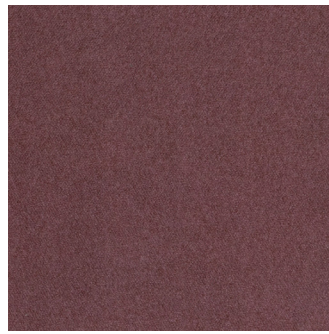
Navy



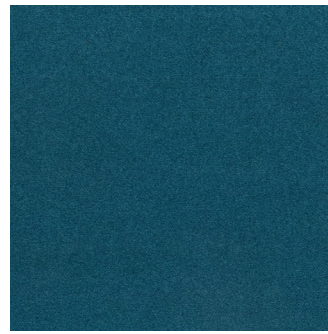
Peach



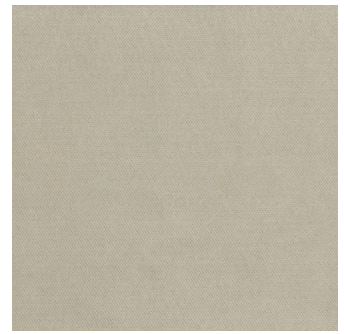
Pearl



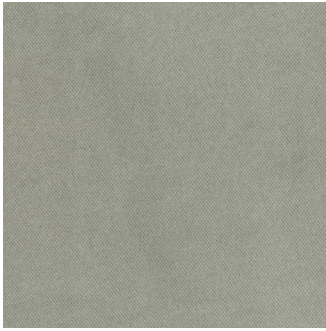
Regal



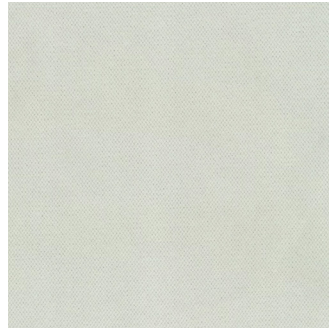
Sapphire



Shell



Silver



Talc

WARWICK

Elton

Warwick Fabrics
(Australia) Pty Ltd
ABN 56 004 832 455
info@warwick.com.au
www.warwick.com.au

National Sales Service
T 1300 787 888
(toll free in Australia)
F +61 (0) 3 9415 7236
F +61 (0) 3 9416 1060

Melbourne
6 - 10 Sackville Street
PO Box 1242
Collingwood VIC 3066
T +61 (0) 3 9419 7544

Colour(s)	Agave, Army, Atlantic, Bark, Carbon, Clove, Cranberry, Date, Eucalyptus, Graphite, Honeycomb, Ivy, Jarrah, Lake, Merlot, Midnight, Moss, Musk, Navy, Peach, Pearl, Regal, Sapphire, Shell, Silver, Talc
Product Type(s)	Upholstery (Heavy Commercial)
Attributes	Halo Easy Care, Oekotex Standard 100
Styles	Velvet, Plain, Texture, Urban, Modern, Rustic, Industrial
Composition	100% Polyester

Test Results

Wyzenbeek (ASTM D3597, mesh, 4lb/3lb)	70,000 Cycles
Seam Slippage (mm) (ISO 13936-2, Load 180)	Warp 3.3, Weft 3
Pilling Resistance (ISO 12945-2)	5
Colourfastness to Light Xenon arc (ISO 105-B02, blue std 6)	5
Colourfastness to Rubbing (ISO 105-X12)	Dry 4/5, Wet 4/5
Free and Hydrolysed Formaldehyde (ISO 14184-1:1998)	Not Detectable
Flammability AS/NZS 1530.3 - 1999	
Ignitability (0-20)	10
Spread of Flame (0-10)	0
Heat Involved (0-10)	2
Smoke Developed (0-10)	5
Oekotex Standard 100	1505024 CENTEXBEL