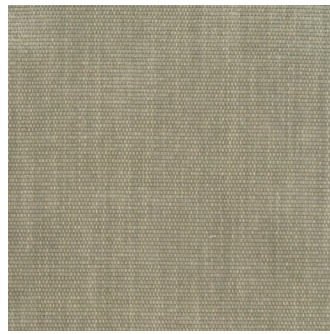


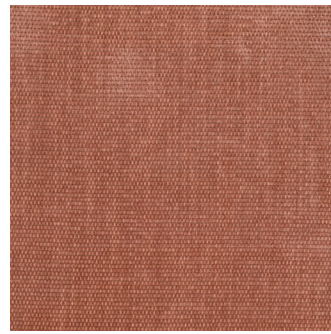
COPELAND



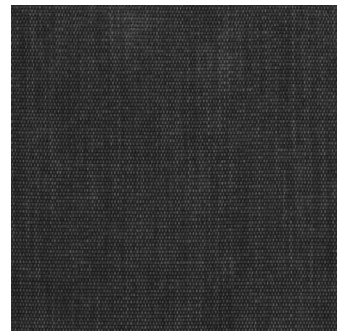
Bark



Birch



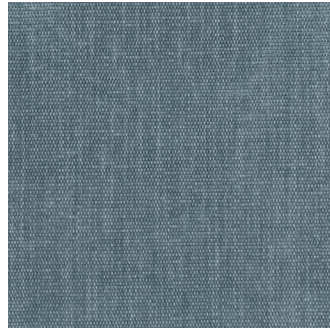
Brick



Charcoal



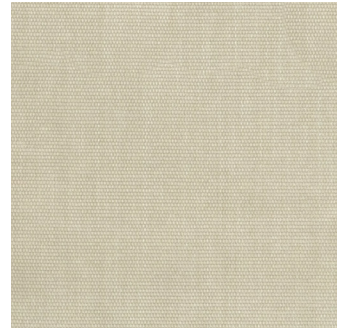
Cloud



Denim



Dusk



Ecru



Eucalyptus



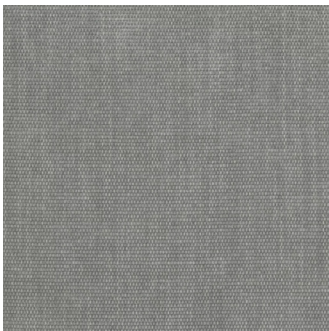
Frost



Granite



Greenstone



Gull



Hazel



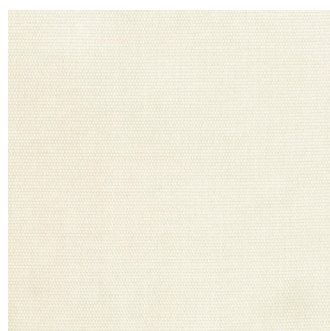
Honey



Hunter



Ink



Ivory



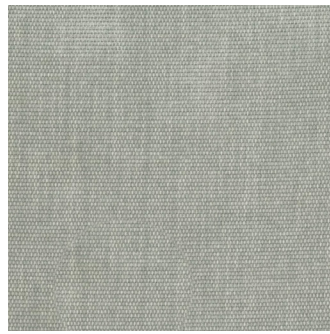
Lagoon



Mallard



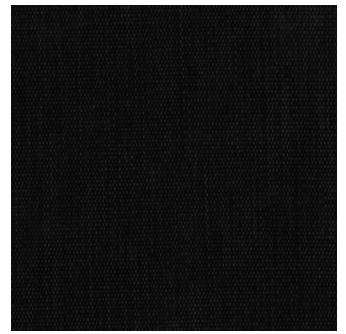
Marl



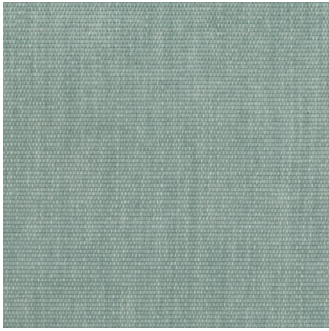
Mist



Olive



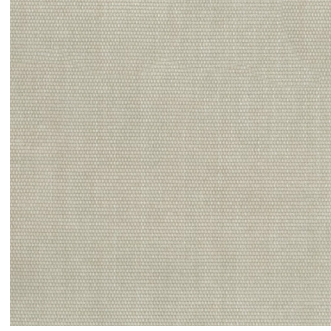
Onyx



Opal



Praline



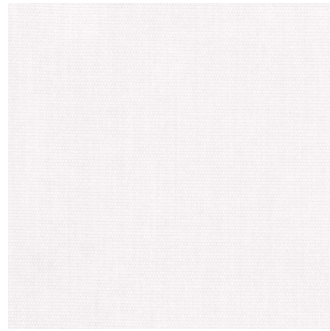
Pumice



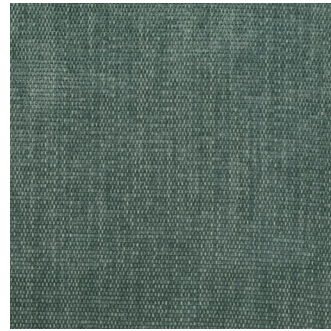
Raisin



Rosebud



Snow



Spruce



Sumac

WARWICK

Copeland

Collection(s)	Gladiator 4 Book, Copeland, Koppal
Colour(s)	Bark, Birch, Brick, Charcoal, Cloud, Denim, Dusk, Ecru, Eucalyptus, Frost, Granite, Greenstone, Gull, Hazel, Honey, Hunter, Ink, Ivory, Lagoon, Mallard, Marl, Mist, Olive, Onyx, Opal, Praline, Pumice, Raisin, Rosebud, Snow, Spruce, Sumac
Product Type(s)	Upholstery (Heavy Commercial)
Attributes	Halo Easy Care, Oekotex Standard 100, Washable
Styles	Plain, Texture, Modern, Industrial
Composition	100% Polyester

Test Results

Wyzenbeek (ASTM D3597, mesh, 4lb/3lb)	100,000 Cycles
Seam Slippage (mm) (ISO 13936-2, Load 180)	Warp 3.1, Weft 3.6
Pilling Resistance (ISO 12945-2)	5
Colourfastness to Light Xenon arc (ISO 105-B02, blue std 6)	5
Colourfastness to Rubbing (ISO 105-X12)	Dry 5, Wet 4/5
Free and Hydrolysed Formaldehyde (ISO 14184-1:1998)	Not Detectable
Flammability AS/NZS 1530.3 - 1999	
Ignitability (0-20)	12
Spread of Flame (0-10)	0
Heat Involved (0-10)	2
Smoke Developed (0-10)	4
Oekotex Standard 100	SH015 133029 TESTEX